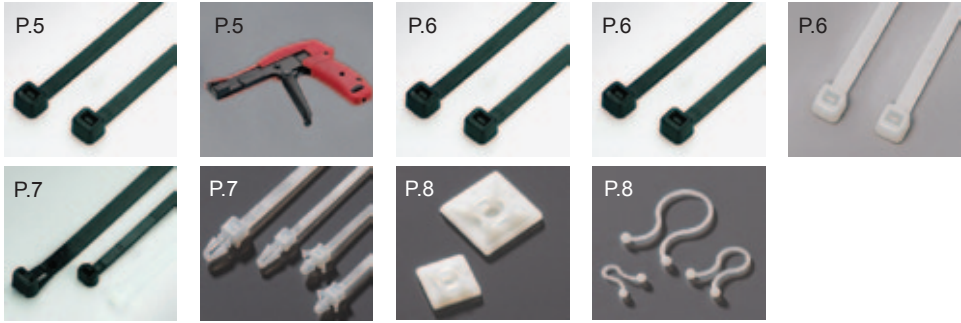


CONTROL PANEL WIRING SOLUTION



PRODUCT INDEX

Fastening



Protection



Connection



For more information, please visit us at: www.giantlok.com

EXCELLENT CONTROL PANEL WIRING SOLUTION

Giantlok's high quality and a full range of wiring accessories are suitable and applicable for all kinds of switchboards and control panels in the electrical and electronic industries. We pay attention to product engineering details, which is greatly contributed to improving efficiency levels of work. Furthermore, we insist on continuously providing high quality products to minimize possibilities of operational failure, so that the cost of rework can be effectively reduced. Giantlok also offers complete series of ergonomically designed crimping tools with just the benefits the one is looking for in effort-saving and hassle-free installation.

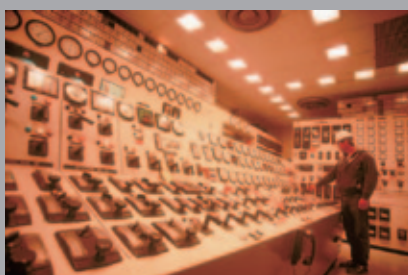


Giantlok's products are formally certified by UL and are in compliance with global electrical regulations. They are technically reliable and qualified for purposes of wiring fixture and electrical connection. Apart from that, our experienced R&D team consistently develops new products and upgrades renovated production technology in responses to the market needs; meanwhile, the existing products are continuously being improved for better performance. Giantlok's capabilities for providing quality control panel wiring products can dramatically help lower your overall cost, so as to facilitate your time for entering the market.

Therefore, no matter whether you are a panel builder, a machinery manufacturer, an automatic control system supplier or even a system integrator, Giantlok is always the best choice of your business partner.

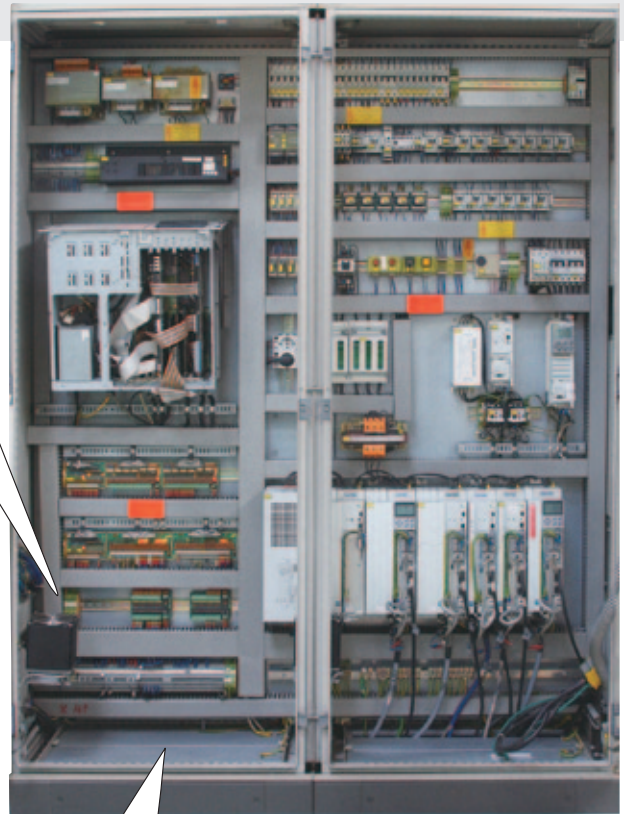
Features of Giantlok's Wiring Solution:

- UL certified products in compliance with global electrical regulations
- Optimized product engineering for efficiency improving and time saving installation
- High quality product line for reliable and long-lasting fixture and wire connecting
- Offering ergonomically designed hand tools to accelerate efficiency of work
- Complete range of various products for one stop procurement convenience
- Compliant with RoHS and REACH environmental protection requirements



APPLICATION OF CONTROL PANELS

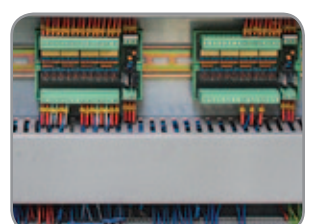
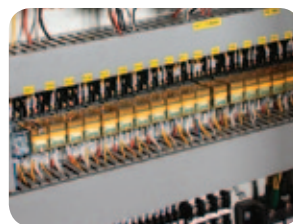
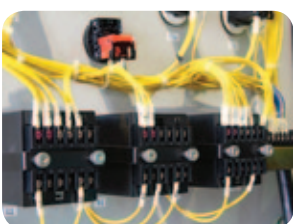
Giantlok's Control Panel Wiring Solution are commonly used in various automatic controlling units including motor control center, automatic manufacturing control system, SPC control system, temperature monitoring system, and PLC control system etc. In addition, from domestic houses to power plants and various industries such as logistics, IT, telecommunication and machinery, Giantlok's excellent wiring accessories can help you connect, manage, and protect the network inside the control panel. We are the best choice for products required in harsh environments, which provide reliable and many beneficial solutions for control panel fabricators.



Outside the control panel

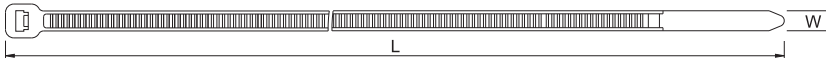


Inside the control panel



CABLE TIES

- > **Material:** Polyamide 6,6, UL94 V2
- > **Color:** Nature color, black
- > **Certificated:**



Part No.	Length mm (inch)	Width mm (inch)	Max.Bundle Dia. mm (inch)	Min. Loop Tensile Strength kg (lbs)	Package (pcs/bag)		Recommended Crimping Tool
GT-100M*	100 (3.94)	2.5 (0.10)	ø22 (0.87)	8.1 (18)	100*	1000*	GIT-702M GIT-702P
GT-140M*	140 (5.51)	2.5 (0.10)	ø33 (1.30)	8.1 (18)	100	1000*	
GT-160M*	160 (6.30)	2.5 (0.10)	ø40 (1.57)	8.1 (18)	100	1000*	
GT-200M*	200 (7.87)	2.5 (0.10)	ø53 (2.09)	8.1 (18)	100*	1000*	
GT-250M*	250 (9.84)	2.8 (0.11)	ø65 (2.56)	14 (31)	100*	1000*	
GT-300M*	300 (11.81)	2.8 (0.11)	ø76 (2.99)	14 (31)	100*	1000	
GT-150I*	150 (5.91)	3.6 (0.14)	ø35 (1.38)	18.2 (40)	100*	1000*	
GT-200I*	200 (7.87)	3.6 (0.14)	ø53 (2.09)	18.2 (40)	100*	1000	
GT-250I*	250 (9.84)	3.6 (0.14)	ø65 (2.56)	18.2 (40)	100*	1000	
GT-300I*	300 (11.81)	3.6 (0.14)	ø76 (2.99)	18.2 (40)	100*	1000	
GT-200ST*	200 (7.87)	4.8 (0.19)	ø50 (1.97)	22.2 (50)	100*	1000	
GT-250ST*	250 (9.84)	4.8 (0.19)	ø60 (2.36)	22.2 (50)	100*	1000	
GT-300ST*	300 (11.81)	4.8 (0.19)	ø76 (2.99)	22.2 (50)	100*	1000*	
GT-370ST*	370 (14.57)	4.8 (0.19)	ø102 (4.02)	22.2 (50)	100*		
GT-450ST*	450 (17.72)	4.8 (0.19)	ø116 (4.57)	22.2 (50)	100*		
GT-300HD*	300 (11.81)	7.6 (0.30)	ø76 (2.99)	54.4 (120)	100*		GIT-704
GT-450HD-S*	450 (17.72)	7.6 (0.30)	ø132 (5.20)	54.4 (120)	100*		

CABLE TIE TOOLS

These ergonomically designed, manually operated cable tie tools speed assembly with tensioning and cutting of cable ties.

GIT-702P*

- > For fast, safe tensioning and cut off cable tie with width from 2.4mm to 4.8mm.
- > Material: Plastic
- > Color: Blue



GIT-704*

- > For cable tie of thickness 1.3mm~2.3mm and width 3.6mm~9.5mm
- > Completely made by press stamping.
- > Point of support in center, providing equidistance motion when tightening the cable tie
- > Wider mouth suitable for wider cable tie.
- > With stop guide to avoid injury.
- > Material: 1.5mm low carbon steel
- > Length: 7 1/2 inch (190+/-3mm)
- > Color: Red



GIT-702M*

- > For fast, safe tensioning and cut off cable tie with width from 2.4mm to 4.8mm.
- > Material: Metal
- > Color: Red



* IN STOCKS

HEAT RESISTANT CABLE TIES

- > **Material:** Polyamide 6,6
- > **Color:** Nature color, black



Part No.	Length mm (inch)	Width mm (inch)	Max.Bundle Dia. mm (inch)	Min. Loop Tensile Strength kg (lbs)	Package (pcs/bag)	
Operation Temperature: -40°C ~+120°C						
GT-80M-HRR	80 (3.15)	2.4 (0.09)	15 (0.59)	8.0 (17.68)	100	1000
GT-100M-HRR	100 (3.94)	2.5 (0.10)	22 (0.87)	8.1 (18)	100	1000
GT-120M-HRR	120 (4.72)	2.5 (0.10)	30 (1.18)	8.1 (18)	100	1000
GT-140M-HRR	140 (5.51)	2.5 (0.10)	33 (1.30)	8.1 (18)	100	1000
GT-150I-HRR	150 (5.91)	3.6 (0.14)	35 (1.38)	18.2 (40)	100	1000
GT-180I-HRR	180 (7.09)	3.6 (0.14)	44 (1.73)	18.2 (40)	100	1000
GT-300I-HRR	300 (11.81)	3.6 (0.14)	76 (2.99)	18.2 (40)	100	1000
GT-190ST-HRR	188 (7.40)	4.8 (0.19)	46 (1.81)	22.2 (50)	100	1000
GT-200ST-HRR	200 (7.87)	4.8 (0.19)	50 (1.97)	22.2 (50)	100	1000
GT-300ST-HRR	300 (11.81)	4.8 (0.19)	76 (2.99)	22.2 (50)	100	1000
Operation Temperature: -40°C ~+150°C						
GT-100M-HRW	100 (3.94)	2.5 (0.10)	22 (0.87)	8.1 (18)	100	1000
GT-150I-HRW	150 (5.91)	3.6 (0.14)	35 (1.38)	18.2 (40)	100	1000
GT-300I-HRW	300 (11.81)	3.6 (0.14)	76 (2.99)	18.2 (40)	100	1000
GT-200ST-HRW	200 (7.87)	4.8 (0.19)	50 (1.97)	22.2 (50)	100	1000

WEATHER RESISTANT CABLE TIES

- > **Material:** Polyamide 6,6
- > **Color:** Black
- > Ultraviolet weather resistant tie for outdoor application



Part No.	Length mm (inch)	Width mm (inch)	Max.Bundle Dia. mm (inch)	Min. Loop Tensile Strength kg (lbs)	Package (pcs/bag)	
GT-80M-UVQ	80 (3.15)	2.4 (0.09)	15 (0.59)	8.0 (17.68)	100	1000
GT-100M-UVQ	100 (3.94)	2.5 (0.10)	22 (0.87)	8.1 (18)	100	1000
GT-160M-UVQ	160 (6.30)	2.5 (0.10)	40 (1.57)	8.1 (18)	100	1000
GT-150I-UVQ	150 (5.91)	3.6 (0.14)	35 (1.38)	18.2 (40)	100	1000
GT-200I-UVQ	200 (7.87)	3.6 (0.14)	53 (2.09)	18.2 (40)	100	1000
GT-250ST-UVQ	250 (9.84)	4.8 (0.19)	60 (2.36)	22.2 (50)	100	1000
GT-300ST-UVQ*	300 (11.81)	4.8 (0.19)	76 (2.99)	22.2 (50)	100*	1000
GT-370ST-UVQ	370 (14.57)	4.8 (0.19)	102 (4.02)	22.2 (50)	100	
GT-450ST-UVQ*	450 (17.72)	4.8 (0.19)	116 (4.57)	22.2 (50)	100*	
GT-300HD-UVQ	300 (11.81)	7.6 (0.30)	76 (2.99)	54.4 (120)	100	
GT-370HD-UVQ	370 (14.57)	7.6 (0.30)	102 (4.02)	54.4 (120)	100	
GT-430HD-UVQ	430 (16.93)	9.0 (0.35)	110 (4.33)	79.4 (175)	100	
GT-530HD-UVQ	526 (20.71)	9.0 (0.35)	140 (5.51)	79.4 (175)	100	

FLAME RETARDANT CABLE TIES

- > **Material:** Polyamide 6,6, UL94 V0
- > **Color:** Nature color

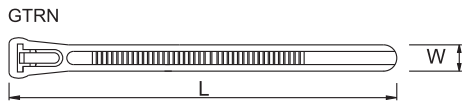
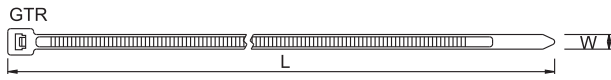


Part No.	Length mm (inch)	Width mm (inch)	Max.Bundle Dia. mm (inch)	Min. Loop Tensile Strength kg (lbs)	Package (pcs/bag)	
GT-100M-WES0	100 (3.94)	2.5 (0.10)	22 (0.87)	8.1 (18)	100	1000
GT-120M-WES0	120 (4.72)	2.5 (0.10)	30 (1.18)	8.1 (18)	100	1000
GT-140I-WES0	140 (5.51)	3.6 (0.14)	33 (1.30)	18.2 (40)	100	1000

* IN STOCKS

RELEASABLE TIES

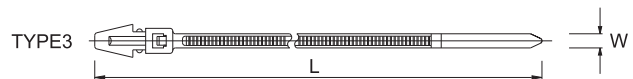
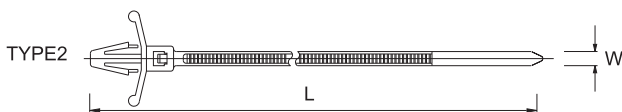
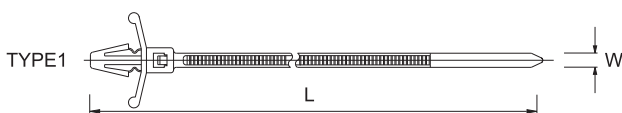
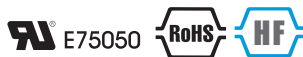
- > **Material:** Polyamide 6,6, UL94 V2
- > **Color:** Nature color, black
- > **Certificated:**



Part No.	Length mm (inch)	Width mm (inch)	Max.Bundle Dia. mm (inch)	Min. Loop Tensile Strength kg (lbs)	Package (pcs/bag)	
GTR-140I*	140 (5.51)	3.6 (0.14)	33 (1.30)	18.2 (40)	100*	1000
GTR-200ST*	200 (7.87)	4.8 (0.19)	50 (1.97)	22.2 (50)	100*	1000
GTR-300ST	300 (11.81)	4.8 (0.19)	76 (2.99)	22.2 (50)	100	1000
GTRN-120HD	120 (4.72)	7.6 (0.30)	30 (1.18)	22.2 (50)	100	
GTRN-150HD	150 (5.91)	7.6 (0.30)	35 (1.38)	22.2 (50)	100	
GTRN-200HD	200 (7.87)	7.6 (0.30)	50 (1.97)	22.2 (50)	100	
GTRN-250HD	250 (9.84)	7.6 (0.30)	66 (2.60)	22.2 (50)	100	
GTRN-300HD	300 (11.81)	7.6 (0.30)	80 (3.15)	22.2 (50)	100	
GTR-450HD	450 (17.72)	9.0 (0.35)	132 (5.20)	79.4 (175)	100	

PUSH MOUNT TIES

- > **Material:** Polyamide 6,6, UL94 V2
- > **Color:** Nature color, black
- > **Certificated:**

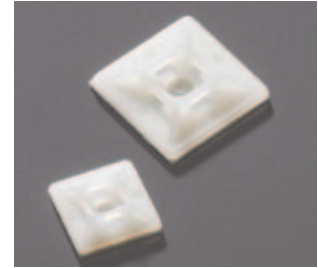
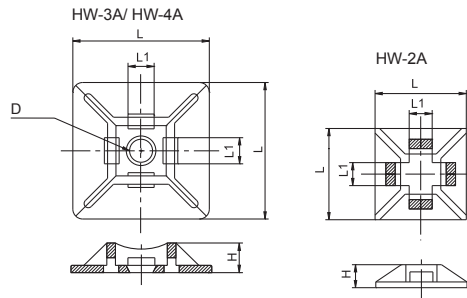


Part No.	Type	Length mm (inch)	Width mm (inch)	Max.Bundle Dia. mm (inch)	Min. Loop Tensile Strength kg (lbs)	Hole Dia. mm(inch)	Panel Thickness mm(inch)	Package (pcs/bag)	
GTP-130ST	1	132 (5.17)	4.8 (0.19)	25 (0.98)	22.2 (50)	ø6.4 (0.252)	~3.2 (0.126)	100	
GTP-170ST	1	170 (6.73)	4.8 (0.19)	38 (1.50)	22.2 (50)	ø6.4 (0.252)	~3.2 (0.126)	100	1000
GTP-190ST	1	200 (7.87)	4.8 (0.19)	45 (1.77)	22.2 (50)	ø6.4 (0.252)	~3.2 (0.126)	100	1000
GTP-110MA*	2	110 (4.33)	2.5 (0.10)	22 (0.87)	8.1 (18)	ø4.8 (0.189)	~2.4 (0.094)	100*	1000
GTP-130IA	2	130 (5.12)	3.2 (0.13)	28 (1.10)	13.6 (30)	ø4.0 (0.157)	~2.0 (0.079)	100	1000
GTP-150I*	3	150 (5.91)	3.6 (0.14)	32 (1.26)	13.6 (30)	ø5.2 (0.205)	~2.8 (0.110)	100*	1000
GTP-200ST	3	202 (7.91)	4.8 (0.19)	46 (1.81)	22.2 (50)	ø6.3 (0.248)	~3.6 (0.141)	100	1000
Releasable									
GTRP-110ST	1	110 (4.33)	4.8 (0.19)	22 (0.87)	22.2 (50)	ø6.4 (0.252)	~3.2 (0.126)	100	
GTRP-190ST	1	200 (7.78)	4.8 (0.19)	45 (1.77)	22.2 (50)	ø6.4 (0.252)	~3.2 (0.126)	100	1000

* IN STOCKS

SELF ADHESIVE CABLE TIE MOUNTS

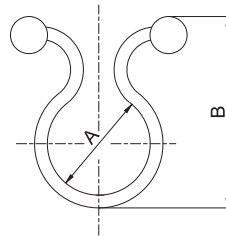
- > **Material:** Polyamide 6,6, UL94 V2
- > **Color:** Nature, black color



Part No.	L (mm)	H (mm)	L1 (mm)	D (mm)	Apply to Cable Ties	Package (pcs/bag)	
HW-2A*	12.7	3.2	3.2	-	"M" ties	100*	1000
HW-3A*	19.0	4.4	4.0	ø 3.5	"M", "I" ties	100*	
HW-4A	27.8	5.7	5.3	ø 5.7	"M", "I", "ST" ties	100	

TWIST LOCKS

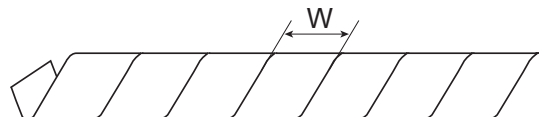
- > **Material:** Polyamide 6,6, UL94 V2
- > **Color:** Nature color



Part No.	A mm(inch)	B mm (inch)	Bundle Dia. mm (inch)	Package (pcs/bag)
TH-D	11.2 (0.441)	28.4 (1.118)	~10.2 (0.402)	1000
TH-E	5.2 (0.205)	21.0 (0.827)	~4.5 (0.177)	1000
TH-F	8.3 (0.327)	25.2 (0.992)	~7.3 (0.287)	1000
TH-G	11.5 (0.453)	30.9 (1.217)	~10.5 (0.413)	1000
TH-H	15.0 (0.591)	35.1 (1.382)	~14.0 (0.551)	1000
TH-I	18.0 (0.709)	40.0 (1.575)	~17.0 (0.669)	1000
TH-J	19.5 (0.768)	42.5 (1.673)	~19.0 (0.748)	1000
TH-K*	22.5 (0.886)	45.5 (1.791)	~22.0 (0.866)	1000
TH-L	5.2 (0.205)	22.0 (0.866)	~5.0 (0.197)	1000

WRAPPING BANDS

- > **Material:** PE. Flame-retardant material are also available.
- > **Color:** Nature, black color



Part No.	In-Diameter (mm)	Out-Diameter (mm)	W (mm)	Wrapping Range (mm)	Package
GST-4*	ø5.0	ø6	7.0	4 - 50	10M
GST-6*	ø7.0	ø8	10.8	6 - 60	10M
GST-8*	ø8.5	ø10	11.4	7.5 - 60	10M
GST-9	ø10.2	ø12	13.9	9 - 65	10M
GST-12	ø13.0	ø15	15.0	12 - 70	10M
GST-15	ø16.4	ø19	18.2	15 - 100	10M
GST-20	ø21.0	ø24	19.6	20 - 130	10M

* IN STOCKS

SLOTTED/SOLID WALL WIRING DUCTS

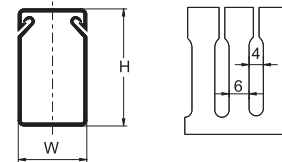
- > Easy and firm snap-on assembly, smooth joining for a better finish.
- > Solid wiring ducts without hole punctures are also available.
- > Manufactured with high quality rigid PVC with good insulation, flame retardant and heat resistant.
- > **Material:** PVC
- > **Color:** White, grey, black, beige, blue. Other colors are also available.



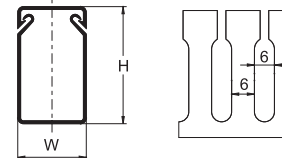
Protection

Part No.	Slot Hole Size	W x H (mm)	Wiring Volume	Mounting Hole Dimension	Length
GW-2545	S.M.L	25x45	20-25 PCS	Small	1.7M & 2M
GW-2565	S.M.L	25x65	40-45 PCS	Small	1.7M & 2M
GW-3333	S.M.L	33x33	25-54 PCS	Small	1.7M & 2M
GW-3345	S.M.L	33x45	40-55 PCS	Small	1.7M & 2M
GW-3365	S.M.L	33x65	60-75 PCS	Small	1.7M & 2M
GW-4545	S.M.L	45x45	60-70 PCS	Small	1.7M & 2M
GW-4565	S.M.L	45x65	110-120 PCS	Small	1.7M & 2M
GW-5050	S.M.L	50x50	80-90 PCS	Small	1.7M & 2M
GW-6545	S.M.L	65x45	110-120 PCS	Small	1.7M & 2M
GW-6565	S.M.L	65x65	110-120 PCS	Small	1.7M & 2M
GW-70100	L	70x100	250-300 PCS	Large	1.7M & 2M
GW-8080	S.L	80x80	240-290 PCS	Large	1.7M & 2M
GW-100100	L	100x100	300-400 PCS	Large	1.7M & 2M
GW-15075	L	150x75	335-500 PCS	Large	1.7M & 2M
* GW-200100	L	200x100	600-800 PCS	Large	1.7M & 2M
* GW-300100	L	300x100	800-1100 PCS	Large	1.7M & 2M

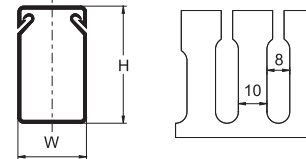
Slot Hole Size S=4mm



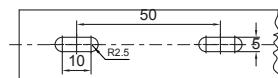
M=6mm



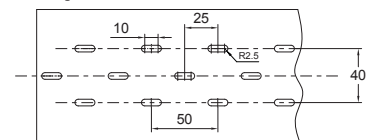
L=8mm



Mounting Hole Dimension Small Duct



Large Duct



* Not included in UL E75050 accreditation.
 ** Wiring volume is base on wires of 2.0 sq. mm.

WIRING DUCT CUTTER

- > Max. operating diameter: 38mm

Part No. GIT-301



MULTI-CUTTER

- > Applicable to cut all angled objects with cutting board.
- > Multi-purpose for household and other special use.
- > With lock latch.
- > Lever editing. Effort saving 25~30%.
- > Max. operating diameter: ~80mm

Part No. GIT-302

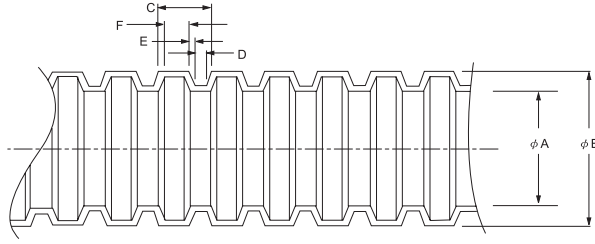


TAIWAN HEAD OFFICE
GIANTLOK CO., LTD.
 NO.1, 26TH RD., TAICHUNG INDUSTRIAL PARK,
 TAICHUNG CITY 40850, TAIWAN
 TEL: +886-4-2359777
 FAX: +886-4-23596705~6
<http://www.giantlok.com>
 Email: service@giantlok.com

GIANTLOK INDIA PVT. LTD.
 Correspondence Address:
 G – 135, UPPER GROUND FLOOR,
 NARAINA VIHAR, NEW DELHI 110028, INDIA
 TEL/FAX: +91-11-25895644

PA FLEXIBLE CONDUITS

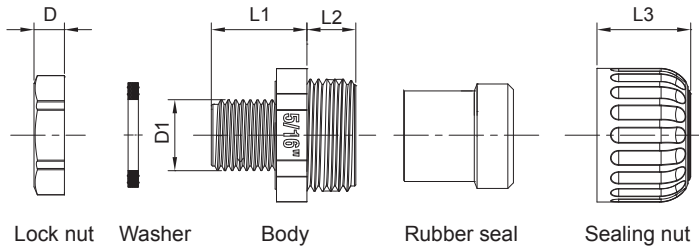
- > **Material:** Polyamide 6
- > **Color:** Black



Part No.	Nominal Dimension		In-Diameter A (mm)	Outer Diameter B (mm)	C (mm)	D (mm)	E (mm)	F (mm)	Package
	mm	Inch							
NFC-07*	6.35	1/4"	ø6.8±0.4	ø10.0±0.4	2.72	0.60	0.30	1.52	100M
NFC-10*	7.94	5/16"	ø9.6±0.4	ø13.0±0.4	2.93	0.60	0.30	1.73	100M
NFC-12*	9.53	3/8"	ø12.0±0.4	ø15.8±0.4	3.18	0.70	0.30	1.88	100M
NFC-17*	12.70	1/2"	ø16.2±0.4	ø21.2±0.4	3.46	0.61	0.40	2.05	100M
NFC-23*	19.05	3/4"	ø21.9±0.4	ø28.5±0.4	4.76	0.75	0.50	3.01	50M
NFC-28*	25.40	1"	ø27.6±0.4	ø34.5±0.4	4.76	0.85	0.60	2.71	50M
NFC-36*	31.75	1 1/4"	ø36.0±0.4	ø42.5±0.4	6.35	1.15	0.75	3.70	25M
NFC-48*	50.80	2"	ø47.0±0.4	ø54.5±0.4	6.35	1.10	0.75	3.75	25M

FIVE-PIECE CONDUIT ADAPTORS

- > **Material:** Polyamide 6,6, UL94 V2. Washer: NBR
- > **Color:** Black

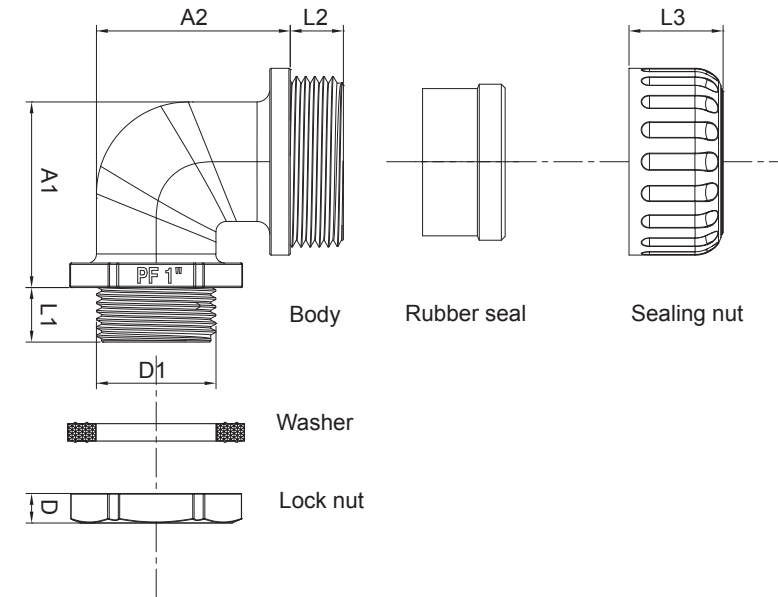


Part No.	Nominal Dimension		D (mm)	D1 (mm)	L1 (mm)	L2 (mm)	L3 (mm)	Package (Pcs/Bag)
	mm	Inch						
FC5-07	6.35	1/4"	5.6	ø13.05	17.6	8.5	17.0	50
FC5-10	7.94	5/16"	5.6	ø13.07	17.6	9.0	17.25	50
FC5-12	9.53	3/8"	5.6	ø16.56	17.5	10.8	17.95	50
FC5-17	12.70	1/2"	6.4	ø20.90	17.5	10.8	18.6	50
FC5-23	19.05	3/4"	6.5	ø26.33	17.8	11.5	20.7	50
FC5-28	25.40	1"	7.5	ø33.12	21.5	11.7	20.89	25
FC5-36	31.75	1 1/4"	7.5	ø42.20	22.5	15.0	24.84	20
FC5-48	50.80	2"	8.5	ø59.51	28.5	14.5	27.78	10

* IN STOCKS

ANGLE TYPE CONDUIT ADAPTORS

- > Insert conduit into claw and screw in the sealing nut for fastening. Insert the body into the board and fix with lock nut.
- > 90 degree design suitable for corner application.
- > Applied without tools make work more efficient.
- > Suitable for fixing wires of machines, mechanical control boards/ boxes and prevent from dust and water.
- > **Material:** Polyamide 6,6, UL94 V2. Washer: NBR
- > **Color:** Black



IP68

Part No.	Thread (PF)	Suitable Conduits	D (mm)	D1 (mm)	L1 (mm)	A1 (mm)	A2 (mm)	L2 (mm)	L3 (mm)	Package (Pcs/Bag)
FCL-07	1/4"	NFC-07	5.6	ø12.85	12.0	25.6	24.49	8.5	16.99	50
FCL-10	5/16"	NFC-10	5.6	ø12.90	12.10	27.9	26.90	9.0	17.25	50
FCL-12	3/8"	NFC-12	5.59	ø16.50	12.0	29.8	29.25	9.4	17.95	50
FCL-17	1/2"	NFC-17	6.4	ø20.70	12.0	37.1	34.15	11.5	18.60	50
FCL-23	3/4"	NFC-23	6.5	ø26.30	12.5	40.85	42.65	12.2	20.71	50
FCL-28	1"	NFC-28	7.5	ø33.20	15.3	49.65	51.45	12.4	20.89	25
FCL-36	1 1/4"	NFC-36	7.5	ø41.85	15.0	63.05	68.55	15.0	24.84	20
FCL-48	2"	NFC-48	8.5	ø59.49	20.0	87.0	89.00	14.5	27.78	10

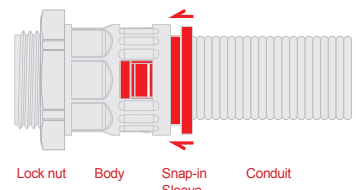
Protection

QUICK DISCONNECT CONDUIT ADAPTORS

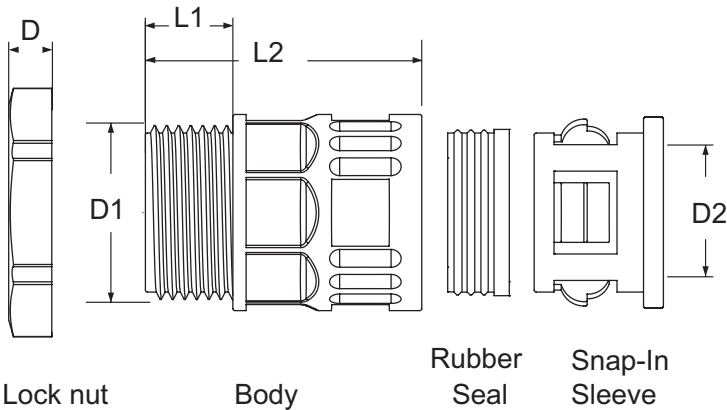
- > Push-in lock design makes connection and disconnection quick and energy-saving.
- > Simple dismantling the conduit from adaptor by pressing the snap-in sleeve.
- > Smallest outer dimensions to be used under confined conditions.
- > For machine, train, elevator...etc., where the maintenance need to be quick and perfectly done
- > Material: UL approved PA66, 94V2
- > Color: Black



Disconnect



Press the snap-in sleeve & pull out

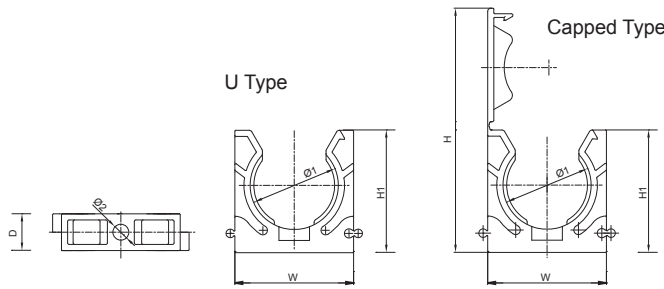


IP68

Part No.	Thread (PF)	Suitable Conduits	D (mm)	D1 (mm)	D2 (mm)	L1 (mm)	L2 (mm)	Package (pcs/bag)
FCG-10	3/8"	NFC-10	ø5.6	ø16.50	ø13.70	10.00	32.50	50
FCG-12	1/2"	NFC-12	ø6.5	ø20.80	ø16.00	9.50	34.50	50
FCG-17	3/4"	NFC-17	ø6.5	ø26.30	ø22.15	13.20	41.70	50
FCG-23	1"	NFC-23	ø7.5	ø33.10	ø29.00	11.30	42.10	25
FCG-28	1-1/4"	NFC-28	ø7.5	ø41.80	ø35.50	14.60	47.60	20
FCG-48	2"	NFC-48	ø8.5	ø59.50	ø55.00	15.50	51.50	10

CONDUIT MOUNTING BRACKETS

> **Material:** Polyamide 6,6, UL94 V2
 > **Color:** Black

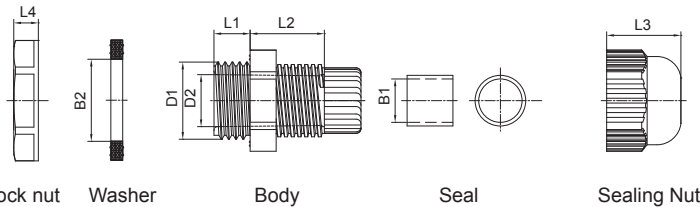


Protection

Part No.		Nominal Dimension		W (mm)	H (mm)	H1 (mm)	D (mm)	Ø 1 (mm)	Ø 2 (mm)	Mounting Screw	Package (Pcs/Bag)
U type	Capped	mm	Inch								
XFN-07	XFW-07*	6.35	1/4"	19.5	40.9	20.6	10	10.1	4.5	M4 x15-30	100
XFN-10	XFW-10*	7.94	5/16"	22.5	46.8	23.5	10	13.2	4.5	M4 x15-30	100
XFN-12	XFW-12*	9.53	3/8"	25.4	52.4	26.2	10	16.0	4.5	M4 x15-30	100
XFN-17	XFW-17*	12.70	1/2"	31.0	63.0	31.0	10	21.5	4.5	M4 x15-30	100
XFN-23	XFW-23*	19.05	3/4"	38.8	79.8	40.0	12	28.8	5.5	M5 x15-30	100
XFN-28	XFW-28*	25.40	1"	47.0	94.6	46.2	12	34.8	5.5	M5 x15-30	50
XFN-36	XFW-36*	31.75	1 1/4"	55.8	113.3	56.0	16	42.8	6.2	M6 x15-30	25
XFN-48	XFW-48*	50.8	2"	70.0	140.1	68.2	20	54.8	6.5	M6 x15-30	10

CABLE GLANDS

> **Material:** Polyamide 6,6, UL94 V2. Neoprene for seal insert, with nut
 > **Color:** Black, grey, light grey
 > **Certificated:**

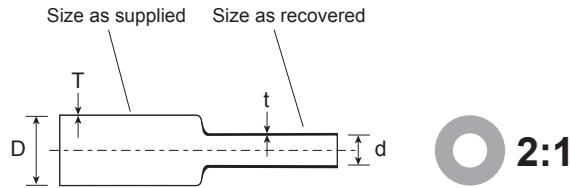
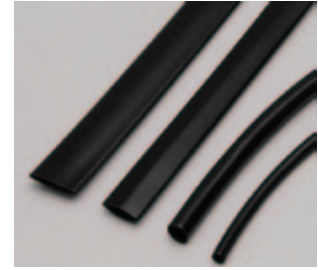


Part No.	Mounting Hole Dia. (mm)	D1 (mm)	D2 (mm)	B1 (mm)	B2 (mm)	L1 (mm)	L2 (mm)	L3 (mm)	L4 (mm)	Cable Range	Package (pcs/bag)
PG Gland Range											
PG-07*	Ø13.0	Ø12.5	Ø7.5	Ø7.2	Ø12.5	8.0	14.5	13	5	3~6.5	100
PG-09*	Ø15.7	Ø15.2	Ø10.0	Ø9.9	Ø15.2	8.0	15.5	15.3	5	4~8	100
PG-11*	Ø19.1	Ø18.6	Ø13.5	Ø13.1	Ø18.6	8.0	17.0	17.5	5	5~10	100
PG-13.5*	Ø20.9	Ø20.4	Ø13.5	Ø13.1	Ø20.4	10.0	17.0	17.5	6	6~12	100
PG-16*	Ø23.0	Ø22.5	Ø17.5	Ø17.0	Ø22.5	10.0	19.0	19.5	6	10~14	100
PG-21*	Ø28.8	Ø28.3	Ø21.4	Ø21.0	Ø28.3	10.0	21.2	25	7	13~18	100
PG-29*	Ø37.5	Ø37.0	Ø28.8	Ø28.0	Ø37.0	11.0	23.4	25.5	7	18~25	50
PG-36*	Ø47.5	Ø47.0	Ø36.5	Ø35.3	Ø47.0	12.0	27.8	30	8	22~32	50
Metric Gland Range											
M12	Ø12.5	Ø12	Ø7.5	Ø7.2	Ø12.5	8.0	14.5	13.0	5	3~6.5	100
M16	Ø16.5	Ø16	Ø11.0	Ø9.9	Ø16.5	7.5	15.5	15.3	5	4~8	100
M20	Ø20.5	Ø20	Ø17.5	Ø17.0	Ø20.5	10.0	19.0	19.5	6	10~14	100
M25	Ø25.5	Ø25	Ø21.4	Ø21.0	Ø25.5	11.0	21.2	25.0	6	13~18	100
M32	Ø32.5	Ø32	Ø27.0	Ø28.0	Ø32.5	10.3	23.4	25.5	7	18~25	50
M40	Ø40.5	Ø40	Ø36.5	Ø35.3	Ø40.5	12.0	27.8	30.0	7	22~32	50

* IN STOCKS

HEAT SHRINKABLE TUBES

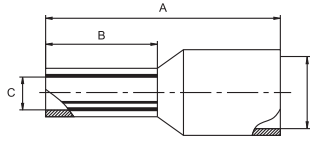
- > **Material:** Cross-linked polyethylene (PEX)
- > **Color:** Black
- > **Features:**
 1. Shrink ratio= 2:1
 2. Min. shrink temperature: 90°C
 3. Operating temperature: -55°C~125°C
 4. Voltage rating: 600V
 5. Temperature rating: 125°C
 6. Flammability: VW-1 (UL224)
 7. Halogen free
 8. RoHS compliant



Part No.	Nominal Dimension	Size As Supplied (mm)		Size As Recovered (mm)		Package
	(mm)	Inside Dia.(D)	Thickness(T)	Inside Dia.(d)	Thickness(t)	M/Spool
HST-0.6BFR	ø0.6	0.9±0.2	0.15±0.03	≤0.4	0.28±0.06	200
HST-0.8BFR	ø0.8	1.1±0.2	0.15±0.03	≤0.5	0.30±0.06	200
HST-1BFR	ø1.0	1.5±0.2	0.18±0.03	≤0.65	0.36±0.08	200
HST-1.5BFR	ø1.5	2.0±0.3	0.18±0.03	≤0.85	0.36±0.08	200
HST-2BFR	ø2.0	2.5±0.3	0.20±0.04	≤1.0	0.40±0.08	200
HST-2.5BFR	ø2.5	3.0±0.3	0.20±0.04	≤1.25	0.40±0.08	200
HST-3BFR	ø3.0	3.5±0.4	0.20±0.04	≤1.5	0.40±0.08	200
HST-3.5BFR	ø3.5	4.0±0.4	0.22±0.04	≤1.75	0.44±0.08	200
HST-4BFR	ø4.0	4.5±0.4	0.25±0.04	≤2.0	0.50±0.08	200
HST-4.5BFR	ø4.5	5.0±0.4	0.25±0.04	≤2.25	0.50±0.08	100
HST-5BFR	ø5.0	5.5±0.4	0.25±0.04	≤2.5	0.50±0.08	100
HST-5.5BFR	ø5.5	6.0±0.4	0.25±0.04	≤2.75	0.50±0.08	100
HST-6BFR	ø6.0	6.5±0.4	0.28±0.04	≤3.0	0.55±0.08	100
HST-7BFR	ø7.0	7.5±0.4	0.28±0.04	≤3.5	0.55±0.08	100
HST-8BFR	ø8.0	8.5±0.5	0.28±0.04	≤4.0	0.60±0.10	100
HST-9BFR	ø9.0	9.5±0.5	0.30±0.05	≤4.5	0.60±0.10	100
HST-10BFR	ø10	10.5±0.5	0.30±0.05	≤5.0	0.60±0.10	100
HST-11BFR	ø11	11.5±0.5	0.30±0.05	≤5.5	0.60±0.10	100
HST-12BFR	ø12	12.5±0.5	0.30±0.05	≤6.0	0.60±0.10	100
HST-13BFR	ø13	13.5±0.5	0.35±0.06	≤6.5	0.70±0.10	100
HST-14BFR	ø14	14.5±0.5	0.35±0.06	≤7.0	0.70±0.10	100
HST-15BFR	ø15	15.5±0.5	0.40±0.08	≤7.5	0.75±0.10	100
HST-16BFR	ø16	16.5±0.5	0.40±0.08	≤8.0	0.75±0.10	100
HST-17BFR	ø17	17.5±0.5	0.40±0.08	≤8.5	0.75±0.10	100
HST-18BFR	ø18	19.0±0.7	0.40±0.08	≤9.0	0.75±0.10	100
HST-20BFR	ø20	21.0±0.7	0.40±0.08	≤10.0	0.75±0.10	100
HST-22BFR	ø22	23.0±0.7	0.40±0.08	≤11.0	0.80±0.10	100
HST-25BFR	ø25	26.0±0.7	0.50±0.10	≤12.5	0.90±0.10	50
HST-28BFR	ø28	29.0±0.7	0.50±0.10	≤14.0	0.90±0.10	50
HST-30BFR	ø30	31.0±0.7	0.50±0.10	≤15.0	0.95±0.10	50
HST-35BFR	ø35	36.0±0.7	0.50±0.10	≤17.5	1.00±0.12	50
HST-40BFR	ø40	41.0±0.7	0.55±0.10	≤20.0	1.00±0.12	50
HST-45BFR	ø45	46.0±0.7	0.55±0.10	≤22.5	1.00±0.12	25
HST-50BFR	ø50	51.0±0.7	0.55±0.10	≤25.0	1.00±0.12	25

CORD-END TERMINALS

> **Material:** Copper tube with tin plated end sleeves with insulation Polyamide 6,6



Color (1)		Color (2)		Color DIN46228/4		Conductor sq. mm. (A.W.G.)	Dimension (mm)				Package (pcs/bag)	Tools
Part No. (W system)		Part No. (T system)		Part No. (DIN system)			A	B	C	D		
CE002506W	Light Blue	CE002506T	Violet			0.25 (24)	10	6	0.75	1.9	1000	GIT-510
CE002508W*	Light Blue					0.25 (24)	12	8	0.75	1.9	1000	
CE003406W	Turquoise	CE003406T	Pink			0.34 (22)	10	6	0.8	1.9	1000	
		CE003408T	Pink			0.34 (22)	12	8	0.8	1.9	1000	
CE005006W	Orange	CE005006T	White			0.5 (20)	12	6	1	2.6	500	GIT-510
CE005008W	Orange	CE005008T	White	CE005008D*	White	0.5 (20)	14	8	1	2.6	500	
CE005010W	Orange	CE005010T	White	CE005010D	White	0.5 (20)	16	10	1	2.6	500	
CE007506W	White			CE007506D	Grey	0.75 (19)	12	6	1.2	2.8	500	
CE007508W	White	CE007508T*	Light Blue	CE007508D	Grey	0.75 (19)	14	8	1.2	2.8	500	GIT-510 GIT-516E1
CE007510W	White			CE007510D	Grey	0.75 (19)	16	10	1.2	2.8	500	
CE010008W	Yellow	CE010008T	Red	CE010008D*	Red	1 (18)	14	8	1.4	3	500	
CE010010W	Yellow	CE010010T	Red	CE010010D	Red	1 (18)	16	10	1.4	3	500	
CE010012W	Yellow			CE010012D*	Red	1 (18)	18	12	1.4	3	500	GIT-516E1
CE015008W	Red	CE015008T*	Black	CE015008D*	Black	1.5 (16)	14	8	1.7	3.5	500	
CE015010W*	Red	CE015010T	Black	CE015010D	Black	1.5 (16)	16	10	1.7	3.5	500	
CE015012W*	Red	CE015012T	Black			1.5 (16)	18	12	1.7	3.5	500	
CE025008W	Blue	CE025008T*	Grey	CE025008D	Blue	2.5 (14)	14	8	2.2	4.2	500	GIT-516E2
				CE025010D	Blue	2.5 (14)	16	10	2.2	4.2	500	
CE025012W*	Blue	CE025012T	Grey	CE025012D*	Blue	2.5 (14)	18	12	2.2	4.2	500	
				CE025018D	Blue	2.5 (14)	24	18	2.2	4.2	500	
CE040010W	Grey					4 (12)	17	10	2.8	4.8	500	GIT-516E1
CE040012W*	Grey	CE040012T	Orange			4 (12)	20	12	2.8	4.8	500	
CE060012W*	Black	CE060012T	Green	CE060012D*	Yellow	6 (10)	20	12	3.5	6.3	500	GIT-516E2
		CE060018T	Green	CE060018D*	Yellow	6 (10)	26	18	3.5	6.3	500	
CE100012W	Ivory	CE100012T	Brown	CE100012D	Red	10 (8)	22	12	4.5	7.6	500	GIT-516E2
CE160012W	Green	CE160012T	Ivory	CE160012D*	Blue	16 (6)	22	12	5.8	8.8	500	GIT-516E3

TOOLS FOR CORD-END TERMINALS

GIT-510

Suitable wire range:
0.25~2.5mm² (AWG 24-14)



GIT-516E1

Suitable wire range:
0.5~4mm² (AWG 22-12)



GIT-516E2

Suitable wire range:
6~16mm² (AWG 10-6)



GIT-516E3

Suitable wire range:
10~25mm² (AWG 8-4)



GIT-516E4

Suitable wire range:
25~50mm² (AWG 4-1)



GIT-518

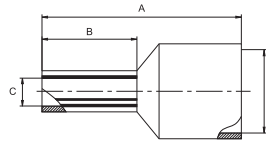
Suitable wire range:
50~150mm²



* IN STOCKS

TWIN CORD-END TERMINALS

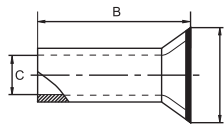
> **Material:** Copper tube with tin plated end sleeves with insulation Polyamide 6,6



Color (1)		Color (2)		Color DIN46228/4		Conductor sq. mm. (A.W.G.)	Dimension (mm)				Package (pcs/bag)	Tools	
Part No. (W system)		Part No. (T system)		Part No. (DIN system)			A	B	C	D			
CT205008W	Orange			CT205008D	White	2x0.50 (20)	15.0	8.0	1.5	4.7	500	GIT-510 GIT-516E1	
CT207508W	White					2x0.75 (19)	15.0	8.0	1.8	5.0	500		
				CT207510D	Grey	2x0.75 (19)	17.0	10.0	1.8	5.0	500		
				CT210008D	Red	2x1.00 (18)	15.0	8.0	2.05	5.4	500		
CT210010W	Yellow	CT210010T	Red	CT210010D	Red	2x1.00 (18)	17.0	10.0	2.05	5.4	500		
				CT215008D	Black	2x1.50 (16)	16.0	8.0	2.3	6.6	500		
		CT215012T	Black			2x1.50 (16)	20.0	12.0	2.3	6.6	500		
				CT225010D	Blue	2x2.50 (14)	18.5	10.0	2.8	7.8	500		GIT-516E1
CT240012W	Grey					2x4.00 (12)	23.0	12.0	3.7	8.8	500		GIT-516E2
CT260014W	Black			CT260014D	Yellow	2x6.00 (10)	26.0	14.0	4.8	10.0	500		GIT-516E2 GIT-516E3
CT210014W	Ivory			CT210014D	Red	2x10.00 (8)	26.5	14.0	6.4	12.8	500	GIT-516E3	

UN-INSULATED CORD-END TERMINALS

> **Material:** Copper tube with tin plated

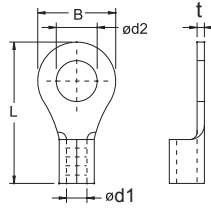


Part No.	Conductor		Dimension (mm)			Package (pcs/bag)	Tools
	sq. mm	A.W.G.	B	C	D		
CN005008	0.5	22	8	1.0	2.1	1000	GIT-510 GIT-516E1
CN007508	0.75	20	8	1.2	2.3	1000	
CN010008	1.0	18	8	1.4	2.5	1000	
CN015008	1.5	16	8	1.7	2.8	1000	
CN025010	2.5	14	10	2.2	3.4	1000	
CN040010	4	12	10	2.8	4.0	1000	GIT-516E1
CN060012	6	10	12	3.5	4.7	1000	GIT-516E2
CN100012	10	8	12	4.5	5.8	1000	GIT-516E2 GIT-516E3
CN100015	10	8	15	4.5	5.8	1000	
CN160012	16	6	12	5.8	7.5	1000	

NON-INSULATED RING TERMINALS

> **Material:** Copper

> **Certificated:**

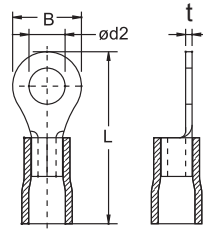
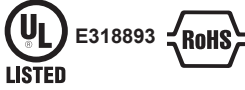


Part No.	Wire Range		d1	d2	B	L	t	Package
	mm ²	AWG	mm	mm	mm	mm	mm	pcs/bag
R1.25-3B	0.5-1.5	22-16	1.9	3.2	5.5	11.5	0.7	1000
R1.25-3.5B	0.5-1.5	22-16	1.9	3.7	5.5	11.5	0.7	1000
R1.25-3.5LB	0.5-1.5	22-16	1.9	3.7	6.6	14.4	0.7	1000
R1.25-4B	0.5-1.5	22-16	1.9	4.3	8.0	15.8	0.7	1000
R1.25-4MB	0.5-1.5	22-16	1.9	4.3	6.6	14.4	0.7	1000
R1.25-5B	0.5-1.5	22-16	1.9	5.3	8.0	15.8	0.7	1000
R1.25-6B	0.5-1.5	22-16	1.9	6.4	11.6	21.5	0.7	1000
R1.25-8B	0.5-1.5	22-16	1.9	8.4	11.6	21.5	0.7	1000
R1.25-10B*	0.5-1.5	22-16	1.9	10.5	13.7	25.5	0.7	1000
R1.25-12B	0.5-1.5	22-16	1.9	13.0	19.0	28.7	0.7	1000
R2-3MB	1.5-2.5	16~14	2.5	3.2	6.6	14.4	0.8	1000
R2-3B	1.5-2.5	16~14	2.5	3.2	8.5	16.8	0.8	1000
R2-3.5B*	1.5-2.5	16~14	2.5	3.7	6.6	14.4	0.8	1000
R2-3.5LB	1.5-2.5	16~14	2.5	3.7	8.5	16.8	0.8	1000
R2-4B	1.5-2.5	16~14	2.5	4.3	8.5	16.8	0.8	1000
R2-4MB	1.5-2.5	16~14	2.5	4.3	6.6	14.4	0.8	1000
R2-5MB	1.5-2.5	16~14	2.5	5.3	8.5	16.8	0.8	1000
R2-5B	1.5-2.5	16~14	2.5	5.3	9.5	16.7	0.8	1000
R2-6B	1.5-2.5	16~14	2.5	6.4	12.0	21.2	0.8	1000
R2-8B	1.5-2.5	16~14	2.5	8.4	12.0	21.2	0.8	1000
R2-10B	1.5-2.5	16~14	2.5	10.5	13.7	25.5	0.8	1000
R2-12B	1.5-2.5	16~14	2.5	13.0	19.0	28.7	0.8	1000
R5.5-3B	4-6	12-10	3.6	3.2	9.5	19.5	1.0	1000
R5.5-3.5B	4-6	12~10	3.6	3.7	9.5	19.5	1.0	500
R5.5-4SB	4-6	12~10	3.6	4.3	7.4	18.5	1.0	500
R5.5-4B	4-6	12~10	3.6	4.3	9.5	19.5	1.0	500
R5.5-5B	4-6	12~10	3.6	5.3	9.5	19.5	1.0	500
R5.5-5SB	4-6	12~10	3.6	5.3	7.4	18.5	1.0	500
R5.5-6B	4-6	12~10	3.6	6.4	12.0	25.5	1.0	500
R5.5-8B	4-6	12~10	3.6	8.4	15.0	27.7	1.0	500
R5.5-10B	4-6	12~10	3.6	10.5	15.0	27.7	1.0	500
R5.5-12B	4-6	12~10	3.6	13.0	19.2	32.4	1.0	500

* IN STOCKS

VINYL-INSULATED RING TERMINALS

- > Material: Copper
- > Insulation: PVC
- > Certified:



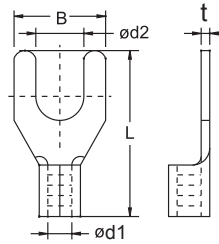
Part No.	Color	Wire Range		B	d2	L	t	Package
		mm ²	AWG	mm	mm	mm	mm	pcs/bag
VR1.25-3	Red	0.5-1.5	22-16	5.5	3.2	17.5	0.75	1000
VR1.25-3.5	Red	0.5-1.5	22-16	5.5	3.7	17.5	0.75	1000
VR1.25-3.5L	Red	0.5-1.5	22-16	6.6	3.7	20.4	0.75	1000
VR1.25-4	Red	0.5-1.5	22-16	8.0	4.3	21.7	0.75	1000
VR1.25-4M	Red	0.5-1.5	22-16	6.6	4.3	20.4	0.75	1000
VR1.25-5*	Red	0.5-1.5	22-16	8.0	5.3	21.7	0.75	1000
VR1.25-6	Red	0.5-1.5	22-16	11.6	6.4	27.6	0.75	1000
VR1.25-8	Red	0.5-1.5	22-16	11.6	8.4	27.6	0.75	1000
VR1.25-10	Red	0.5-1.5	22-16	13.7	10.5	31.5	0.75	1000
VR1.25-12	Red	0.5-1.5	22-16	19.0	13.0	35.0	0.75	1000
VR2-3M	Blue	1.5-2.5	16-14	6.6	3.2	20.6	0.80	1000
VR2-3*	Blue	1.5-2.5	16-14	8.5	3.2	23.0	0.80	1000
VR2-3.5	Blue	1.5-2.5	16-14	6.6	3.7	20.6	0.80	1000
VR2-3.5L	Blue	1.5-2.5	16-14	8.5	3.7	23.0	0.80	1000
VR2-4	Blue	1.5-2.5	16-14	8.5	4.3	23.0	0.80	1000
VR2-4M	Blue	1.5-2.5	16-14	6.6	4.3	20.8	0.80	1000
VR2-5M	Blue	1.5-2.5	16-14	8.5	5.3	23.0	0.80	1000
VR2-5	Blue	1.5-2.5	16-14	9.5	5.3	23.0	0.80	1000
VR2-6	Blue	1.5-2.5	16-14	12.0	6.4	28.1	0.80	1000
VR2-8	Blue	1.5-2.5	16-14	12.0	8.4	28.1	0.80	1000
VR2-10	Blue	1.5-2.5	16-14	13.7	10.5	31.9	0.80	1000
VR2-12	Blue	1.5-2.5	16-14	19.0	13.0	35.5	0.80	1000
VR5.5-3	Yellow	4-6	12-10	9.5	3.2	26.7	1.00	500
VR5.5-3.5	Yellow	4-6	12-10	9.5	3.7	26.7	1.00	500
VR5.5-4S	Yellow	4-6	12-10	7.4	4.3	26.7	1.00	500
VR5.5-4	Yellow	4-6	12-10	9.5	4.3	26.7	1.00	500
VR5.5-5	Yellow	4-6	12-10	9.5	5.3	26.7	1.00	500
VR5.5-5S	Yellow	4-6	12-10	7.4	5.3	26.7	1.00	500
VR5.5-6	Yellow	4-6	12-10	12.0	6.4	32.7	1.00	500
VR5.5-8	Yellow	4-6	12-10	15.0	8.4	34.9	1.00	500
VR5.5-10	Yellow	4-6	12-10	15.0	10.5	34.9	1.00	500
VR5.5-12	Yellow	4-6	12-10	19.2	13.0	39.9	1.00	500

* IN STOCKS

NON-INSULATED SPADE TERMINALS

> Material: Copper

> Certified:

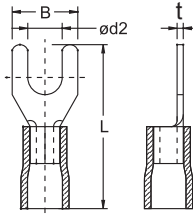


Part No.	Wire Range		d1	d2	B	L	t	Package
	mm ²	AWG	mm	mm	mm	mm	mm	pcs/bag
Y1.25-3B	0.5-1.5	22-16	1.9	3.2	5.7	16.0	0.7	1000
Y1.25-3.5SB	0.5-1.5	22-16	1.9	3.7	5.7	16.0	0.7	1000
Y1.25-3.5B	0.5-1.5	22-16	1.9	3.7	6.2	16.0	0.7	1000
Y1.25-4SB	0.5-1.5	22-16	1.9	4.3	6.4	16.0	0.7	1000
Y1.25-4B	0.5-1.5	22-16	1.9	4.3	7.2	16.0	0.7	1000
Y1.25-5B	0.5-1.5	22-16	1.9	5.3	8.0	16.0	0.7	1000
Y1.25-6B*	0.5-1.5	22-16	1.9	6.4	10.7	17.0	0.7	1000
Y1.25-6SB	0.5-1.5	22-16	1.9	6.4	9.3	17.0	0.7	1000
Y1.25-8B	0.5-1.5	22-16	1.9	8.4	13.5	22.1	0.7	1000
Y2-3B	1.5-2.5	16~14	2.5	3.2	5.7	16.0	0.8	1000
Y2-3.5SB	1.5-2.5	16~14	2.5	3.7	5.7	16.0	0.8	1000
Y2-3.5B	1.5-2.5	16~14	2.5	3.7	6.2	16.0	0.8	1000
Y2-4SB	1.5-2.5	16~14	2.5	4.3	6.4	16.0	0.8	1000
Y2-4B*	1.5-2.5	16~14	2.5	4.3	7.2	16.0	0.8	1000
Y2-5B	1.5-2.5	16~14	2.5	5.3	8.0	16.0	0.8	1000
Y2-6B	1.5-2.5	16~14	2.5	6.4	10.7	17.0	0.8	1000
Y2-6SB	1.5-2.5	16~14	2.5	6.4	9.3	17.0	0.8	1000
Y2-8B	1.5-2.5	16~14	2.5	8.4	13.5	22.1	0.8	1000
Y5.5-3B	4-6	12~10	3.6	3.2	7.3	19.5	1.0	500
Y5.5-3.5SB	4-6	12~10	3.6	3.7	6.3	19.5	1.0	500
Y5.5-3.5B	4-6	12~10	3.6	3.7	8.1	18.5	1.0	500
Y5.5-4B	4-6	12~10	3.6	4.3	8.2	19.5	1.0	500
Y5.5-4SB	4-6	12~10	3.6	4.3	6.3	19.5	1.0	500
Y5.5-5B	4-6	12~10	3.6	5.3	9.0	19.5	1.0	500
Y5.5-6B	4-6	12~10	3.6	6.4	12.0	23.1	1.0	500
Y5.5-6SB	4-6	12~10	3.6	6.4	9.0	23.0	1.0	500
Y5.5-8B	4-6	12~10	3.6	8.4	13.5	25.0	1.0	500

* IN STOCKS

VINYL-INSULATED SPADE TERMINALS

- > Material: Copper
- > Insulation: PVC
- > Certified:

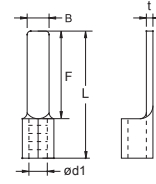


Part No.	Color	Wire Range		B	d2	L	t	Package
		mm ²	AWG	mm	mm	mm	mm	pcs/bag
VY1.25-3*	Red	0.5-1.5	22-16	5.7	3.2	22.0	0.75	1000
VY1.25-3.5	Red	0.5-1.5	22-16	6.2	3.7	22.0	0.75	1000
VY1.25-3.5S	Red	0.5-1.5	22-16	5.7	3.7	22.0	0.75	1000
VY1.25-4	Red	0.5-1.5	22-16	7.2	4.3	22.0	0.75	1000
VY1.25-4S	Red	0.5-1.5	22-16	6.4	4.3	22.0	0.75	1000
VY1.25-5	Red	0.5-1.5	22-16	8.0	5.3	22.0	0.75	1000
VY1.25-6	Red	0.5-1.5	22-16	10.7	6.4	23.0	0.75	1000
VY1.25-6S	Red	0.5-1.5	22-16	9.3	6.4	23.0	0.75	1000
VY1.25-8	Red	0.5-1.5	22-16	13.5	8.4	28.0	0.75	1000
VY2-3*	Blue	1.5-2.5	16-14	5.7	3.2	22.5	0.80	1000
VY2-3.5	Blue	1.5-2.5	16-14	6.2	3.7	22.5	0.80	1000
VY2-3.5S	Blue	1.5-2.5	16-14	5.7	3.7	22.5	0.80	1000
VY2-4	Blue	1.5-2.5	16-14	7.2	4.3	22.5	0.80	1000
VY2-4S	Blue	1.5-2.5	16-14	6.4	4.3	22.5	0.80	1000
VY2-5	Blue	1.5-2.5	16-14	8.0	5.3	22.5	0.80	1000
VY2-6	Blue	1.5-2.5	16-14	10.7	6.4	23.5	0.80	1000
VY2-6S	Blue	1.5-2.5	16-14	9.3	6.4	23.5	0.80	1000
VY2-8	Blue	1.5-2.5	16-14	13.5	8.4	28.5	0.80	1000
VY5.5-3	Yellow	4-6	12-10	7.3	3.2	26.7	1.00	500
VY5.5-3.5	Yellow	4-6	12-10	8.1	3.7	26.7	1.00	500
VY5.5-3.5S	Yellow	4-6	12-10	6.3	3.7	26.7	1.00	500
VY5.5-4 *	Yellow	4-6	12-10	8.2	4.3	26.7	1.00	500
VY5.5-4S	Yellow	4-6	12-10	6.3	4.3	26.7	1.00	500
VY5.5-5	Yellow	4-6	12-10	9.0	5.3	26.7	1.00	500
VY5.5-6	Yellow	4-6	12-10	12.0	6.4	30.7	1.00	500
VY5.5-6S	Yellow	4-6	12-10	9.0	6.4	30.7	1.00	500
VY5.5-8	Yellow	4-6	12-10	13.5	8.4	32.6	1.00	500

* IN STOCKS

VINYL-INSULATED BLADE TERMINALS

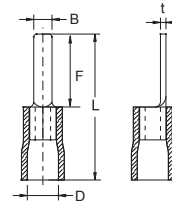
- > Material: Copper
- > **Certificated:**



Part No.	Wire Range		d1	B	F	L	t	Package
	mm ²	AWG	mm	mm	mm	mm	mm	pcs/bag
B1.25-9SB	0.5-1.5	22-16	1.9	2.30	9	14.0	0.75	1000
B1.25-9B	0.5-1.5	22-16	1.9	2.70	9	14.0	0.75	1000
B1.25-12B	0.5-1.5	22-16	1.9	3.00	12	16.0	0.75	1000
B1.25-14.5B	0.5-1.5	22-16	1.9	3.00	14.5	19.5	0.75	1000
B1.25-18B	0.5-1.5	22-16	1.9	2.45	18	23.0	0.75	1000
B2-9B	1.5-2.5	16-14	2.5	2.80	9	14.0	0.80	1000
B2-16B	1.5-2.5	16-14	2.5	2.90	16	21.0	0.80	1000
B2-18B	1.5-2.5	16-14	2.5	2.45	18	23.0	0.80	1000
B5.5-10B	4-6	12-10	3.6	2.80	10	16.5	1.00	500
B5.5-13B	4-6	12-10	3.6	4.60	13	19.5	1.00	500
B5.5-18B	4-6	12-10	3.6	4.50	18	24.5	1.00	500

VINYL-INSULATED BLADE TERMINALS

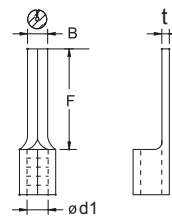
- > Material: Copper
- > Insulation: PVC



Part No.	Color	Wire Range		D	B	F	L	t	Package
		mm ²	AWG	mm	mm	mm	mm	mm	pcs/bag
VB1.25-9S	Red	0.5-1.5	22-16	4.3	2.30	9	19.5	0.75	1000
VB1.25-9	Red	0.5-1.5	22-16	4.3	2.70	9	19.5	0.75	1000
VB1.25-12	Red	0.5-1.5	22-16	4.3	3.00	12	25.0	0.75	1000
VB1.25-14.5	Red	0.5-1.5	22-16	4.3	3.00	14.5	21.5	0.75	1000
VB1.25-18	Red	0.5-1.5	22-16	4.3	2.45	18	28.5	0.75	1000
VB2-9*	Blue	1.5-2.5	16-14	4.7	2.80	9	20.0	0.80	1000
VB2-16	Blue	1.5-2.5	16-14	4.7	2.90	16	27.0	0.80	1000
VB2-18	Blue	1.5-2.5	16-14	4.7	2.45	18	29.0	0.80	1000
VB5.5-10	Yellow	4-6	12-10	6.7	2.80	10	24.0	1.00	500
VB5.5-13	Yellow	4-6	12-10	6.7	4.50	13	27.0	1.00	500
VB5.5-18	Yellow	4-6	12-10	6.7	4.50	18	32.0	1.00	500

NON-INSULATED PIN TERMINALS

- > Material: Copper

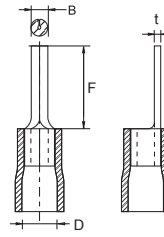


Part No.	Wire Range		d1	B	F	t	Package
	mm ²	AWG	mm	mm	mm	mm	pcs/bag
P1.25-9B	0.5-1.5	22-16	1.9	2.0	9.0	0.75	1000
P1.25-12B	0.5-1.5	22-16	1.9	2.0	12.0	0.75	1000
P2-9B*	1.5-2.5	16~14	2.5	2.0	9.0	0.80	1000
P2-12B	1.5-2.5	16~14	2.5	2.0	12.0	0.80	1000
P5.5-13.5B	4-6	12~10	3.7	2.7	13.5	1.00	500

* IN STOCKS

VINYL-INSULATED PIN TERMINALS

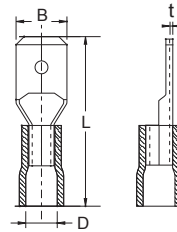
- > Material: Copper
- > Insulation: PVC
- > **Certificated:**



Part No.	Color	Wire Range		D mm	B mm	F mm	t mm	Package pcs/bag
		mm ²	AWG					
VP1.25-9*	Red	0.5-1.5	22-16	4.3	2.0	9.0	0.75	1000
VP1.25-12	Red	0.5-1.5	22-16	4.3	2.0	12.0	0.75	1000
VP2-9	Blue	1.5-2.5	16-14	4.7	2.0	9.0	0.80	1000
VP2-12*	Blue	1.5-2.5	16-14	4.7	2.0	12.0	0.80	1000
VP5.5-13.5	Yellow	4-6	12-10	6.7	2.7	13.5	1.00	500

VINYL-INSULATED MALE DISCONNECTORS

- > Material: Brass
- > Insulation: PVC

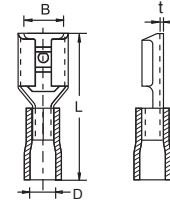


Part No.	Color	Wire Range		Tab size mm	D mm	B mm	L mm	t mm	Package pcs/bag
		mm ²	AWG						
VT1.25-2.8S	Red	0.5-1.5	22-16	2.8x0.5	3.6	2.9	21.5	0.25	1000
VT1.25-2.8	Red	0.5-1.5	22-16	2.8x0.8	3.6	2.9	21.5	0.40	1000
VT1.25-4.8S	Red	0.5-1.5	22-16	4.8x0.5	3.6	4.8	21.5	0.25	1000
VT1.25-4.8	Red	0.5-1.5	22-16	4.8x0.8	3.6	4.8	21.5	0.40	1000
VT1.25-6.4	Red	0.5-1.5	22-16	6.4x0.8	3.6	6.4	21.5	0.40	1000
VT2-2.8S	Blue	1.5-2.5	16-14	2.8x0.5	4.4	2.9	22.0	0.25	1000
VT2-2.8	Blue	1.5-2.5	16-14	2.8x0.8	4.4	2.9	22.0	0.40	1000
VT2-4.8S	Blue	1.5-2.5	16-14	4.8x0.5	4.4	4.8	22.0	0.25	1000
VT2-4.8	Blue	1.5-2.5	16-14	4.8x0.8	4.4	4.8	22.0	0.40	1000
VT2-6.4	Blue	1.5-2.5	16-14	6.4x0.8	4.4	6.4	22.0	0.40	1000
VT5.5-2.8S*	Yellow	4-6	12-10	2.8x0.5	5.4	2.9	23.5	0.25	500
VT5.5-2.8	Yellow	4-6	12-10	2.8x0.8	5.4	2.9	23.5	0.40	500
VT5.5-4.8S	Yellow	4-6	12-10	4.8x0.5	5.4	4.8	23.5	0.25	500
VT5.5-4.8	Yellow	4-6	12-10	4.8x0.8	5.4	4.8	23.5	0.40	500
VT5.5-6.4	Yellow	4-6	12-10	6.4x0.8	5.4	6.4	23.5	0.40	500

* IN STOCKS

VINYL-INSULATED FEMALE DISCONNECTORS

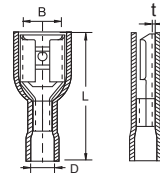
- > Material: Brass
- > Insulation: PVC



Part No.	Color	Wire Range		Tab size	D	B	L	t	Package
		mm ²	AWG	mm	mm	mm	mm	mm	pcs/bag
VU1.25-2.8S	Red	0.5-1.5	22-16	2.8x0.5	3.6	3.2	18.5	0.25	1000
VU1.25-2.8	Red	0.5-1.5	22-16	2.8x0.8	3.6	3.2	18.5	0.25	1000
VU1.25-4.8S	Red	0.5-1.5	22-16	4.8x0.5	3.6	5.0	19.0	0.4	1000
VU1.25-4.8	Red	0.5-1.5	22-16	4.8x0.8	3.6	5.0	19.0	0.4	1000
VU1.25-5.2	Red	0.5-1.5	22-16	5.2x0.5	3.6	5.6	20.0	0.4	1000
VU1.25-6.4	Red	0.5-1.5	22-16	6.4x0.8	3.6	6.7	21.0	0.4	1000
VU2-2.8S*	Blue	1.5-2.5	16-14	2.8x0.5	4.4	3.2	18.5	0.25	1000
VU2-2.8	Blue	1.5-2.5	16-14	2.8x0.8	4.4	3.2	18.5	0.25	1000
VU2-4.8S	Blue	1.5-2.5	16-14	4.8x0.5	4.4	5.0	19.0	0.4	1000
VU2-4.8	Blue	1.5-2.5	16-14	4.8x0.8	4.4	5.0	19.0	0.4	1000
VU2-5.2	Blue	1.5-2.5	16-14	5.2x0.5	4.4	5.6	20.0	0.4	1000
VU2-6.4	Blue	1.5-2.5	16-14	6.4x0.8	4.4	6.7	21.0	0.4	1000
VU5.5-2.8S	Yellow	4-6	12-10	2.8x0.5	5.4	3.2	22.0	0.4	500
VU5.5-2.8	Yellow	4-6	12-10	2.8x0.8	5.4	3.2	22.0	0.4	500
VU5.5-4.8S	Yellow	4-6	12-10	4.8x0.5	5.4	5.0	22.0	0.4	500
VU5.5-4.8	Yellow	4-6	12-10	4.8x0.8	5.4	5.0	22.0	0.4	500
VU5.5-6.4	Yellow	4-6	12-10	6.4x0.8	5.4	6.7	25.0	0.4	500
VU5.5-9.4	Yellow	4-6	12-10	9.4x1.2	5.4	9.9	29.0	0.5	500

VINYL-FULLY INSULATED FEMALE DISCONNECTORS

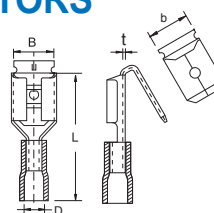
- > Material: Brass
- > Insulation: PVC



Part No.	Color	Wire Range		Tab size	D	B	L	t	Package
		mm ²	AWG	mm	mm	mm	mm	mm	pcs/bag
FVU1.25-4.8S	Red	0.5-1.5	22-16	4.8x0.5	4.0	5.0	20.0	0.4	1000
FVU1.25-4.8	Red	0.5-1.5	22-16	4.8x0.8	4.0	5.0	20.0	0.4	1000
FVU1.25-6.4	Red	0.5-1.5	22-16	6.4x0.8	4.0	6.7	22.0	0.4	1000
FVU2-4.8S	Blue	1.5-2.5	16-14	4.8x0.5	4.5	5.0	20.0	0.4	1000
FVU2-4.8	Blue	1.5-2.5	16-14	4.8x0.8	4.5	5.0	20.0	0.4	1000
FVU2-6.4	Blue	1.5-2.5	16-14	6.4x0.8	4.5	6.7	22.5	0.4	1000
FVU5.5-4.8S	Yellow	4-6	12-10	4.8x0.5	5.5	5.0	23.5	0.4	500
FVU5.5-4.8	Yellow	4-6	12-10	4.8x0.8	5.5	5.0	23.5	0.4	500
FVU5.5-6.4	Yellow	4-6	12-10	6.4x0.8	5.5	6.7	24.0	0.4	500

VINYL-INSULATED PIGGYBACK DISCONNECTORS

- > Material: Brass
- > Insulation: PVC

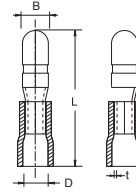


Part No.	Color	Wire Range		Tab size	D	B	L	b	t	Package
		mm ²	AWG	mm	mm	mm	mm	mm	mm	pcs/bag
VPB1.25-6.4	Red	0.5-1.5	22-16	6.4X0.8	3.6	6.7	22.0	6.35	0.4	1000
VPB2-6.4	Blue	1.5-2.5	16-14	6.4X0.8	4.4	6.7	22.0	6.35	0.4	1000
VPB5.5-6.4	Yellow	4-6	12-10	6.4X0.8	5.4	6.7	23.0	6.35	0.4	500

* IN STOCKS

VINYL-INSULATED MALE BULLET CONNECTORS

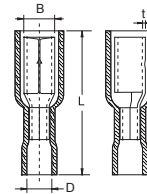
- > Material: Brass
- > Insulation: PVC



Part No.	Color	Wire Range		D	B	L	t	Package
		mm ²	AWG	mm	mm	mm	mm	pcs/bag
FVBT1.25-156	Red	0.5-1.5	22-16	3.6	4.0	21.5	0.4	1000
FVBT2-156	Blue	1.5-2.5	16-14	4.4	4.0	22.0	0.4	1000
FVBT2-195	Blue	1.5-2.5	16-14	4.4	5.0	22.0	0.4	1000
FVBT5.5-156	Yellow	4-6	12-10	5.4	4.0	25.0	0.4	500
FVBT5.5-195	Yellow	4-6	12-10	5.4	5.0	25.0	0.4	500

VINYL-FULLY INSULATED FEMALE BULLET CONNECTORS

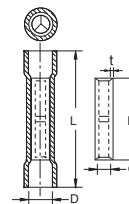
- > Material: Brass
- > Insulation: PVC



Part No.	Color	Wire Range		D	B	L	t	Package
		mm ²	AWG	mm	mm	mm	mm	pcs/bag
FVBU1.25-156	Red	0.5-1.5	22-16	3.3	4.65	23.0	0.4	1000
FVBU2-156	Blue	1.5-2.5	16-14	4.0	4.65	23.5	0.4	1000
FVBU2-195	Blue	1.5-2.5	16-14	4.0	5.65	23.5	0.4	1000
FVBU5.5-156	Yellow	4-6	12-10	6.0	4.65	27.5	0.4	500
FVBU5.5-195	Yellow	4-6	12-10	5.3	5.65	23.5	0.4	500

VINYL-INSULATED BUTT SPLICES

- > Material: Copper
- > Insulation: PVC

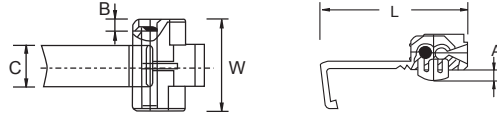


Part No.	Material	Color	Wire Range		D	d	L	F	t	Package
			mm ²	AWG	mm	mm	mm	mm	mm	pcs/bag
VI1.25S	Copper Plate	Red	0.5-1.5	22-16	4.0	1.75	24.0	15.0	0.50	1000
VI1.25M	Copper Plate	Red	0.5-1.5	22-16	4.3	2.10	25.0	15.0	0.65	1000
VI1.25	Copper Plate	Red	0.5-1.5	22-16	4.3	1.70	25.0	15.0	0.75	1000
VI1.25T	Copper Tubular	Red	0.5-1.5	22-16	4.3	1.70	25.0	15.0	0.75	1000
VI2S	Copper Plate	Blue	1.5-2.5	16-14	4.3	2.30	24.0	15.0	0.50	1000
VI2M	Copper Plate	Blue	1.5-2.5	16-14	4.5	2.80	25.0	15.0	0.65	1000
VI2	Copper Plate	Blue	1.5-2.5	16-14	4.5	2.30	25.0	15.0	0.80	1000
VI2T	Copper Tubular	Blue	1.5-2.5	16-14	4.5	2.40	25.0	15.0	0.80	1000
VI5.5S	Copper Plate	Yellow	4-6	12-10	6.3	3.80	25.5	15.0	0.50	500
VI5.5M	Copper Plate	Yellow	4-6	12-10	6.5	3.80	27.0	15.0	0.75	500
VI5.5	Copper Plate	Yellow	4-6	12-10	6.5	3.40	27.0	15.0	1.00	500
VI5.5T	Copper Tubular	Yellow	4-6	12-10	6.5	3.57	27.0	15.0	0.95	500

QUICK SPLICES



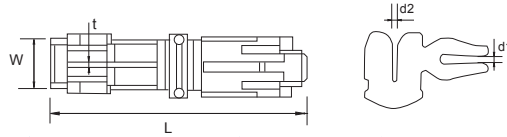
QST Type



Part No.	Color	Wire Range	A	B	C	W	L	Package
		AWG	mm	mm	mm	mm	mm	pcs/bag
QST1.25	Red	22-16	4.0	4.0	10.6	19.6	31.2	250
QST2	Blue	16-14	4.0	4.0	10.6	19.6	31.3	250
QST5.5	Yellow	12-10	4.0	4.0	20.0	20.0	31.6	250



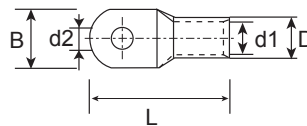
QSA Type



Part No.	Color	Wire Range	d2	d1	W	L	t	Package
		AWG	mm	mm	mm	mm	mm	pcs/bag
QSA1.25	Red	22-16	0.52	0.52	9.4	35.0	0.8	250
QSA2	Blue	16-14	0.70	0.52	9.4	35.0	0.8	250
QSA5.5	Yellow	12-10	1.20	0.52	9.4	35.0	0.8	250

COOPER/CABLE LUGS

> Material: Copper

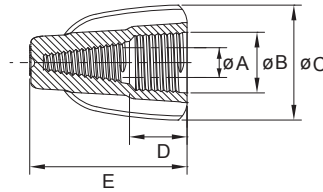


Part No.	Wire Range		d1 (mm)	d2 (mm)	D (mm)	B (mm)	L (mm)	Package (pcs/bag)
	AWG	din - mm ²						
SC10-6	8	10.0	5.0	6.4	7.0	12.4	27.0	100
SC10-8	8	10.0	5.0	8.4	7.0	12.4	27.0	100
SC16-8	6	16.0	5.8	8.4	7.8	12.4	31.0	100
SC25-8	4	25.0	7.5	8.4	9.5	15.5	34.0	100
SC35-8	2	35.0	8.6	8.4	11.4	16.5	38.0	100
SC35-10	2	35.0	8.6	10.5	11.4	17.5	40.5	100
SC50-8	1	50.0	9.6	8.4	12.6	18.0	43.5	50
SC50-10	1	50.0	9.6	10.5	12.6	18.0	43.5	50
SC50-12	1	50.0	9.6	13.0	12.6	18.0	43.5	50
SC70-10	2/0	70.0	12.0	10.5	15.0	21.8	50.0	50
SC95-10	3/0	95.0	13.5	10.5	17.4	25.0	55.0	50
SC95-12	3/0	95.0	13.5	13.0	17.4	25.0	55.0	50
SC120-10	4/0	120.0	15.0	10.5	19.8	28.4	60.0	25
SC120-12	4/0	120.0	15.0	13.0	19.8	28.4	60.0	25
SC120-14	4/0	120.0	15.0	15.0	19.8	28.4	64.0	25
SC150-12	250/300	150.0	16.5	13.0	21.2	30.5	69.0	25
SC150-14	250/300	150.0	16.5	15.0	21.2	30.5	69.0	25
SC150-16	250/300	150.0	16.5	17.0	21.2	30.5	69.0	25

W SERIES WINGED WIRE CONNECTORS

> **Material:** UL approved PP, steel spring

> **Certificated:**

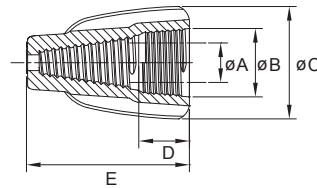
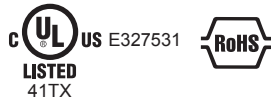


Part No.	Temp Rating	Voltage	Dimension (mm)					Suitable Wire A.W.G.	Color	Package (pcs/bag)
			A	B	C	D	E			
W1	105°C (221°F)	600V	ø6.7	ø10.0	ø19.0	8.7	25.9	18-10	Yellow	500
W2	105°C (221°F)	600V	ø7.8	ø11.2	ø18.95	8.55	28.9	22-8	Tan	500
W3	105°C (221°F)	600V	ø9.4	ø13.3	ø22.9	9.2	31.9	18-8	Red	500
W4	105°C (221°F)	600V	ø10.5	ø14.5	ø25.1	9.6	32.83	18-8	Gray	200
W5	105°C (221°F)	600V	ø12.8	ø17.5	ø31.8	12.45	40.2	14-6	Blue	200

WINGED GROUNDING WIRE CONNECTORS

> **Material:** UL approved PP, steel spring

> **Certificated:**

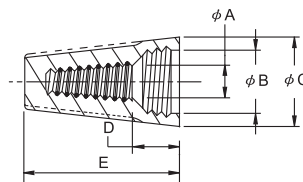


Part No.	Temp Rating	Voltage	Dimension (mm)					Suitable Wire A.W.G.	Color	Package (pcs/bag)
			A	B	C	D	E			
WG	105°C (221°F)	600V	ø9.4	ø12.15	ø19.9	9.1	28.9	14-10	Green	500

E SERIES WIRE CONNECTORS

> **Material:** UL approved PP, steel spring

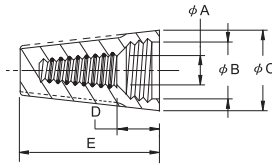
> **Certificated:**



Part No.	Temp Rating	Voltage	Dimension (mm)					Suitable Wire A.W.G.	Color	Package (pcs/bag)
			A	B	C	D	E			
E1	105°C (221°F)	300V	ø5.0	ø6.0	ø8.5	3.5	14.7	22-18	Gray	1000
E2	105°C (221°F)	300V	ø6.0	ø7.5	ø10.1	6.5	17.5	22-14	Blue	1000
E3	105°C (221°F)	600V	ø6.2	ø8.2	ø11.2	8.0	21.4	22-14	Orange	500
E4	105°C (221°F)	600V	ø8.7	ø10.5	ø13.7	7.5	23.6	18-10	Yellow	500
E6	105°C (221°F)	600V	ø9.30	ø13.2	ø16.0	10.1	26.0	18-10	Red	500

E SERIES HIGH TEMPERATURE WIRE CONNECTORS

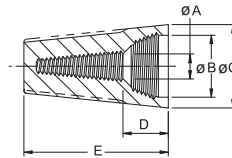
- > **Material:** UL approved PBT, steel spring
- > **Certificated:**



Part No.	Temp Rating	Voltage	Dimension (mm)					Suitable Wire A.W.G.	Color	Package (pcs/bag)
			A	B	C	D	E			
E1B	150°C (302°F)	300V	ø5.0	ø6.0	ø8.5	3.5	14.7	22-18	Black	1000
E2B	150°C (302°F)	300V	ø6.0	ø7.5	ø10.1	6.5	17.5	22-14	Black	1000
E3B	150°C (302°F)	600V	ø6.2	ø8.2	ø11.2	8.0	21.4	22-14	Black	500
E4B	150°C (302°F)	600V	ø8.7	ø10.5	ø13.7	7.5	23.6	18-10	Black	500

H SERIES ALL PLASTIC WIRE CONNECTORS

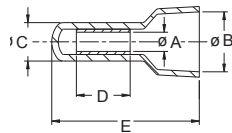
- > **Material:** UL approved Urea
- > **Certificated:**



Part No.	Temp Rating	Voltage	Dimension (mm)					Suitable Wire A.W.G.	Color	Package (pcs/bag)
			A	B	C	D	E			
H1	100°C (212°F)	300V	ø4.5	ø6.5	ø8.5	4.0	14.7	22-16	Yellow	1000
H3	100°C (212°F)	300V	ø5.0	ø7.4	ø9.7	4.5	17.6	22-16	Ivory	1000
H5	100°C (212°F)	300V	ø4.0	ø8.8	ø11.2	7.65	21.9	22-14	Yellow	1000

C SERIES CLOSE-END CRIMP CONNECTORS

- > **Material:** UL approved 94V-2 or 94V0 Polyamide 6,6, copper tube or aluminum tube
- > **Certificated:**



Part No.	Temp Rating	Voltage	Dimension (mm)					Suitable Wire A.W.G.	Color	Suitable Crimping Tools	Package (pcs/bag)
			A	B	C	D	E				
Polyamide 6,6 (UL94 V2) + Copper Tube											
C3*	105°C (221°F)	300V	ø2.6	ø7.9	ø5.1	6.8	19.3	22-16	Natural	GIT-517C1	1000
C4*	105°C (221°F)	300V	ø3.2	ø7.9	ø5.6	6.8	20.1	22-14	Natural	GIT-517 C1	1000
C5*	105°C (221°F)	300V	ø4.3	ø10.3	ø7.1	7.8	24.6	22-10	Natural	GIT-517C1, GIT-517C5	1000
Polyamide 6,6 (UL94 V2) + Aluminum Tube											
C3-L*	105°C (221°F)	300V	ø2.5	ø6.5	ø5.1	6.4	18.0	22-16	Natural	GIT-517C1	1000
C4-L*	105°C (221°F)	300V	ø3.1	ø7.8	ø5.7	8.0	20.1	22-14	Natural	GIT-517 C1	1000
C5-L	105°C (221°F)	300V	ø4.3	ø10.6	ø7.3	10.7	24.8	22-10	Natural	GIT-517C1, GIT-517C5	1000
Polyamide 6,6 (UL94 V0) + Copper Tube											
C3V0	105°C (221°F)	300V	ø2.5	ø6.5	ø5.1	6.4	18.0	22-16	White	GIT-517C1	1000
C4V0	105°C (221°F)	300V	ø3.1	ø7.8	ø5.7	8.0	20.1	22-14	White	GIT-517 C1	1000
C5V0	105°C (221°F)	300V	ø4.3	ø10.6	ø7.3	10.7	24.8	22-10	White	GIT-517C1, GIT-517C5	1000
Polyamide 6,6 (UL94 V0) + Aluminum Tube											
C3-LV0	105°C (221°F)	300V	ø2.5	ø6.5	ø5.1	6.4	18.0	22-16	White	GIT-517C1	1000
C4-LV0	105°C (221°F)	300V	ø3.1	ø7.8	ø5.7	8.0	20.1	22-14	White	GIT-517 C1	1000
C5-LV0	105°C (221°F)	300V	ø4.3	ø10.6	ø7.3	10.7	24.8	22-10	White	GIT-517C1, GIT-517C5	1000

GIT-517C1

Suitable Wirer Range: 1 - 5mm² (AWG 22-12)



GIT-517C5

Suitable Wire Range: 4 - 10mm² (AWG 12-8)



* IN STOCKS



Giantlok is one of the brands of Hua Wei Industrial Co., Ltd., which is the leading manufacturer of cable ties and wiring accessories. In the past 3 decades, the mother company of Giantlok has distributed its products over 75 countries worldwide, and established reputation of its world-class quality. Giantlok succeeded to the advantages of strong innovation and manufacturing capacity of Hua Wei Industrial Co., Ltd, and brings total solution products as well as services for the demands of customers to reduce their installed costs in the industry with better business performance.

Giantlok is certified to ISO9001, ISO14001, and ISO/TS16949 accreditations and spares no effort to research and develop new products to meet industrial highest quality standard for its business partners.

Giantlok has one-stop shop products lines, which included cable ties, stainless steel ties, security ties, cable markers, cable clamps, fasteners, cable clips, PC board supports, cable protection, wiring ducts, conduits, adapters, wire connectors, and terminals, to support different requirement of customers from every industry. By means of outstanding designing and tooling capacity, Giantlok supports customers with high quality cable ties and wiring accessories, which are UL, CSA, Lloyd's registered, and GL accreditation and complied EU RoHS and REACH environmental regulations.

In order to serve global customers better, Giantlok set up factories in Taiwan, China, Thailand, and strategic branches in Korea, India, Indonesia, and Philippine. Through its network, Giantlok ensured that the best and fastest solutions are offered to the customers.

Giantlok will continuously devote itself to provide optimized solution of fastening system to the market. For more information, please visit us at: www.giantlok.com



TAIWAN HEAD OFFICE
GIANTLOK CO., LTD.
NO.1, 26TH RD., TAICHUNG INDUSTRIAL PARK,
TAICHUNG CITY 40850, TAIWAN
TEL: +886-4-23597777
FAX: +886-4-23596705~6
<http://www.giantlok.com>
Email: service@giantlok.com

GIANTLOK INDIA PVT. LTD.
Correspondence Address:
G – 135, UPPER GROUND FLOOR,
NARAINA VIHAR, NEW DELHI 110028, INDIA
TEL/FAX: +91-11-25895644